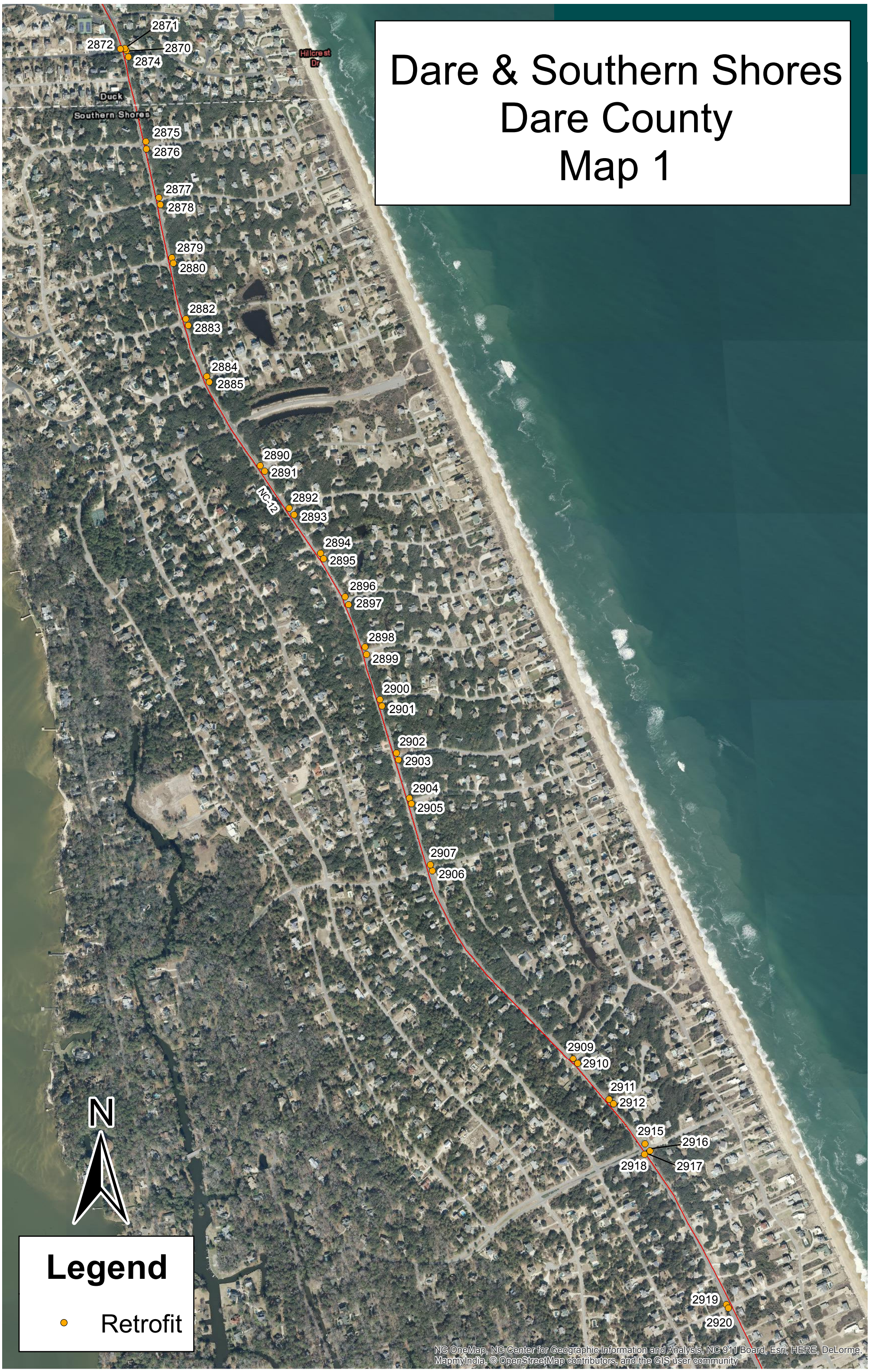


# Dare & Southern Shores Dare County Map 1

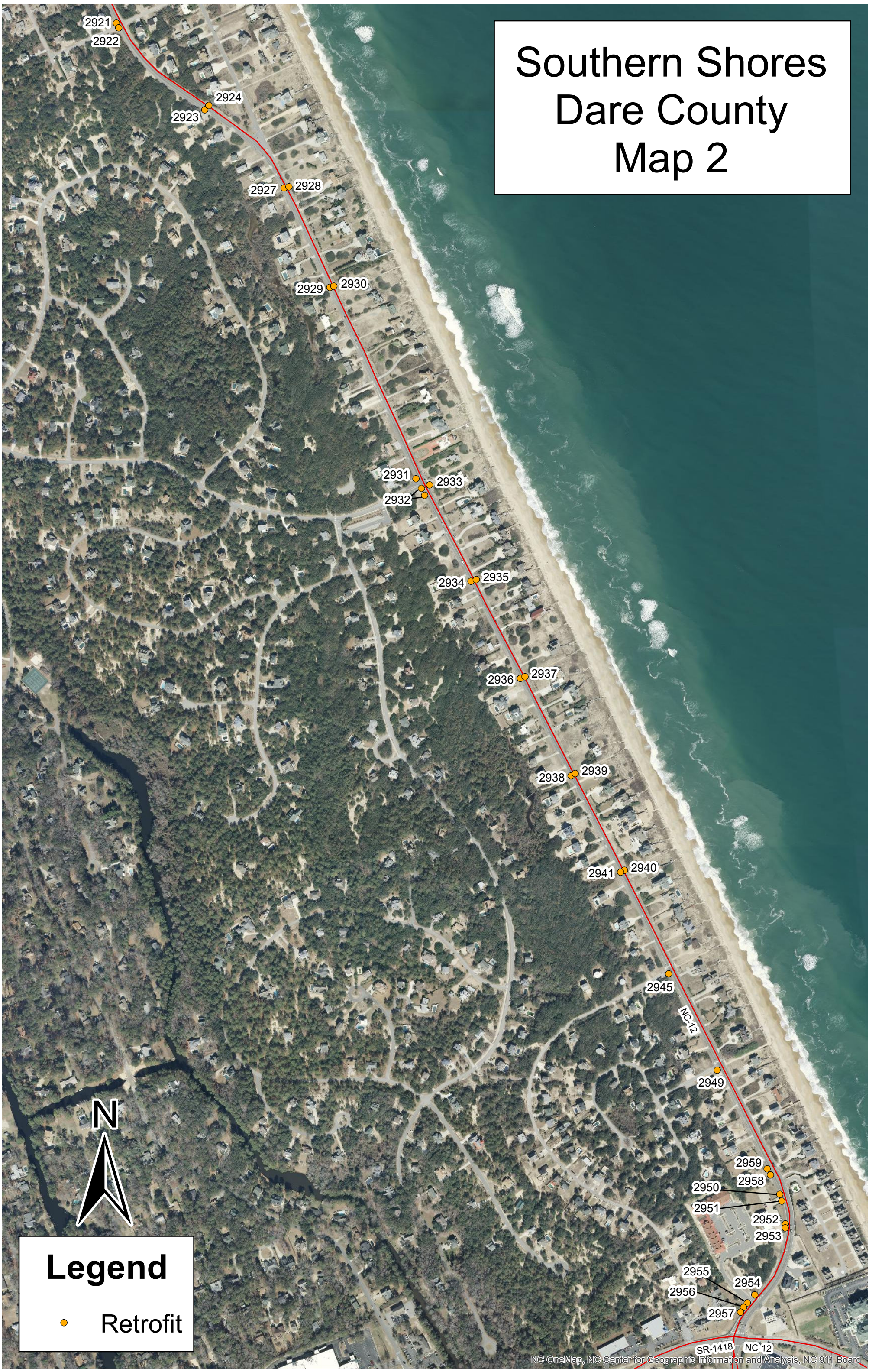


**Legend**

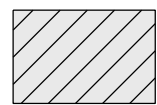
- Retrofit



# Southern Shores Dare County Map 2

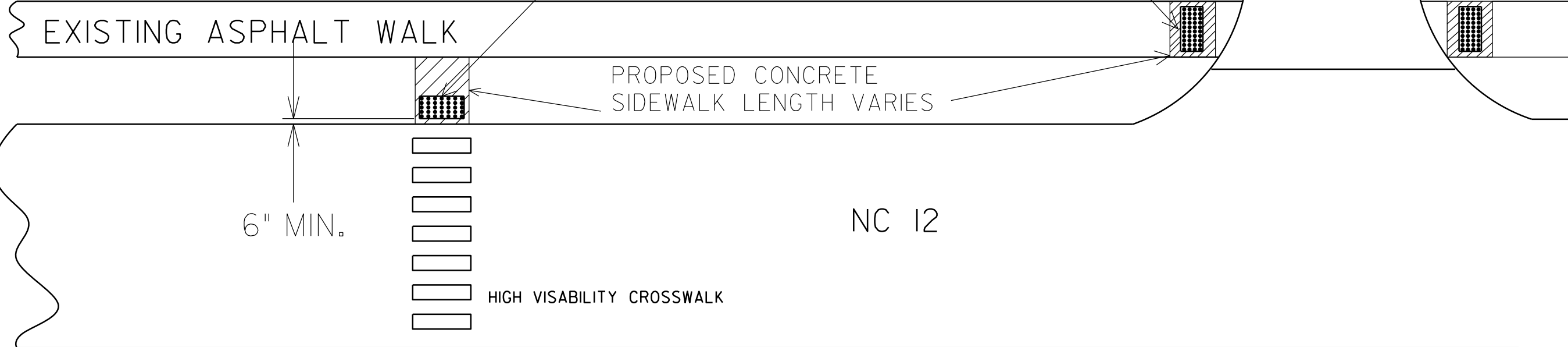






PAY LIMITS FOR RETRO FIT CURB RAMP. MAXIMUM AREA FOR THIS LINE ITEM IS 8.0 SQUARE YARDS. IF ADDITIONAL CONCRETE IS REQUIRED IT WILL BE COMPENSATED UNDER THE SIDEWALK LINE ITEM

2' LENGTH X 4' WIDTH DETECTABLE WARNING DOMES



NOTE:

SEE STANDARD DRAWINGS, SHEETS 848.05 & 848.06, SECTION 848 OF THE "NCDOT STANDARD SPECIFICATIONS FOR ROADS AND STRUCTURES" AND OTHER SPECIAL PROVISIONS OF THE CONTRACT.

Division	County	Municipality	Under 5k Population? (Y/N)	Major Route	Minor Route	Number of Retrofit Ramps	Retrofit Ramp ID	Map #
1	DARE	DUCK	Y	NC-12	CHARLES JENKINS LANE	4	2870, 2871, 2872, 2874	1
1	DARE	SOUTHERN SHORES	Y	NC-12	13TH AVE	2	2875, 2876	1
1	DARE	SOUTHERN SHORES	Y	NC-12	12TH AVE	2	2877, 2878	1
1	DARE	SOUTHERN SHORES	Y	NC-12	11TH AVE	2	2879, 2880	1
1	DARE	SOUTHERN SHORES	Y	NC-12	10TH AVE	2	2882, 2883	1
1	DARE	SOUTHERN SHORES	Y	NC-12	9TH ST	2	2884, 2885	1
1	DARE	SOUTHERN SHORES	Y	NC-12	8TH ST	2	2890, 2891	1
1	DARE	SOUTHERN SHORES	Y	NC-12	7TH ST	2	2892, 2893	1
1	DARE	SOUTHERN SHORES	Y	NC-12	6TH ST	2	2894, 2895	1
1	DARE	SOUTHERN SHORES	Y	NC-12	5TH AVE	2	2896, 2897	1
1	DARE	SOUTHERN SHORES	Y	NC-12	4TH AVE	2	2898, 2899	1
1	DARE	SOUTHERN SHORES	Y	NC-12	3RD AVE	2	2900, 2901	1
1	DARE	SOUTHERN SHORES	Y	NC-12	2ND AVE	2	2902, 2903	1
1	DARE	SOUTHERN SHORES	Y	NC-12	1ST AVE	2	2904, 2905	1
1	DARE	SOUTHERN SHORES	Y	NC-12	HICKORY TRAIL	2	2906, 2907	1
1	DARE	SOUTHERN SHORES	Y	NC-12	PERIWINKLE PLACE	2	2909, 2910	1
1	DARE	SOUTHERN SHORES	Y	NC-12	SANDFIDDLER CT	2	2911, 2912	1
1	DARE	SOUTHERN SHORES	Y	NC-12	DOGWOOD TRAIL	4	2915, 2916, 2917, 2918	1
1	DARE	SOUTHERN SHORES	Y	NC-12	DOLPHIN RUN	2	2919, 2920	1
1	DARE	SOUTHERN SHORES	Y	NC-12	PORPOISE RUN	2	2921, 2922	2
1	DARE	SOUTHERN SHORES	Y	NC-12	CROSS WALK	2	2923, 2924	2
1	DARE	SOUTHERN SHORES	Y	NC-12	CROSS WALK	2	2927, 2928	2
1	DARE	SOUTHERN SHORES	Y	NC-12	CROSS WALK	2	2929, 2930	2
1	DARE	SOUTHERN SHORES	Y	NC-12	CHICHAUK TRAIL	4	2931, 2932 (2), 2933	2
1	DARE	SOUTHERN SHORES	Y	NC-12	CROSS WALK	2	2934, 2935	2
1	DARE	SOUTHERN SHORES	Y	NC-12	CROSS WALK	2	2936, 2937	2
1	DARE	SOUTHERN SHORES	Y	NC-12	CROSS WALK	2	2938, 2939	2
1	DARE	SOUTHERN SHORES	Y	NC-12	CROSS WALK	2	2940, 2941	2
1	DARE	SOUTHERN SHORES	Y	NC-12	SKYLINE RD	1	2945	2
1	DARE	SOUTHERN SHORES	Y	NC-12	OCEAN VIEW LOOP	1	2949	2
1	DARE	SOUTHERN SHORES	Y	NC-12	SHOPPING CENTER	2	2958, 2959	2
1	DARE	SOUTHERN SHORES	Y	NC-12	SOUTHERN SHORES REALTY	2	2950, 2951	2
1	DARE	SOUTHERN SHORES	Y	NC-12	SOUTHERN SHORES REALTY	2	2952, 2953	2
1	DARE	SOUTHERN SHORES	Y	NC-12	SHOPPING CENTER	2	2954, 2955	2
1	DARE	SOUTHERN SHORES	Y	NC-12	POLICE DEPARTMENT	2	2956, 2957	2

PROJECT NO.	SHEET NO.	TOTAL NO.
DA00322		

## SUMMARY OF QUANTITIES

PROJECT NO	COUNTY	MAP NO	ROUTE	DESCRIPTION	TYP NO	LANES	LANE TYPE	MOBILIZATION LS	AC PLANT MIX (REPAIR) TONS	2'-6" CURB & GUTTER LF	4" CONCRETE SIDEWALK SY	RETROFIT EXISTING CURB RAMPS EA	ADJ. OF METER OR VALVE BOX EA	TEMPORARY TRAFFIC CONTROL LS
DA00322	Dare	1	NC 12 SOUTHERN SHORES	FROM US 158 TO DUCK	1	2	2WU	1	5	10	10	74	1	1
<b>TOTAL FOR MAP NO. 1</b>									<b>5</b>	<b>10</b>	<b>10</b>	<b>74</b>	<b>1</b>	
<b>TOTAL FOR PROJ NO. DA00322</b>									<b>5</b>	<b>10</b>	<b>10</b>	<b>74</b>	<b>1</b>	
<b>GRAND TOTAL</b>								<b>1</b>	<b>5</b>	<b>10</b>	<b>10</b>	<b>74</b>	<b>1</b>	<b>1</b>